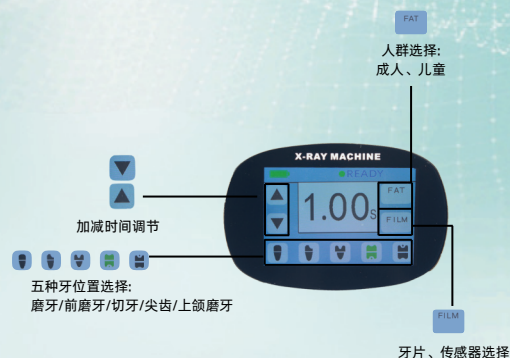


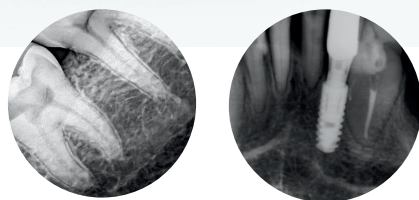
手持式X射线机

Handheld X-ray machine



STM-S680(触摸屏)

- 超强穿透力 性能拉满: (60KV2mA) 高强发射功率 缩短曝光时间, 避免伪影, 实现超清成像
- 护得安心: 采用99.9%高纯度铅皮防护用的放心
- 经久耐用: 优质的高频X射线管曝光次数高达1万小时
- 2.8英寸高清数码屏 展现直观用户界面 灵敏按键 一触即达 体积小巧、重量轻、单手即可轻松拍



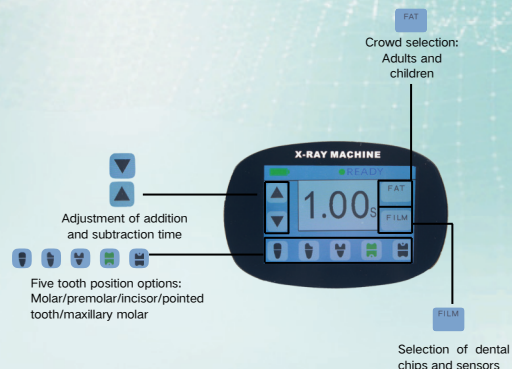
设备参数 Device parameters

| | |
|---------|---------------|
| X射线管高压 | 60KV |
| X射线管电流 | 2mA |
| 加载泄露辐射 | <0.25MG/H |
| 皮焦距 | 200mm |
| 锂电池容量 | 14.8V/2500mAh |
| 工作频率 | 30HZ |
| 管焦点 | 0.7mm*0.7mm |
| 照射时间 | 0.1-2.0s |
| 非加载泄露辐射 | <0MG/H |
| 线野限制直径 | 58mm |
| 球管寿命 | 平均1万小时 |
| 整机重量 | 1.92kg |



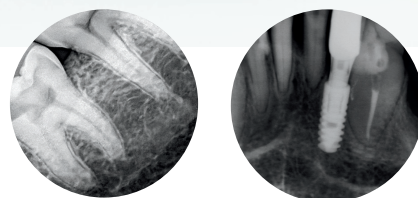
三种颜色可选

Handheld X-ray machine



STM-S680 (touch screen)

- Ultra strong penetration performance: (60KV2mA) High strength transmission power reduces exposure time, avoids artifacts, and achieves ultra clear imaging
- Safe and secure: using 99.9% high-purity lead skin for protection with peace of mind
- Durable: High quality high-frequency X-ray tube with exposure times up to 10000 hours
- The 2.8-inch high-definition digital screen presents an intuitive user interface with sensitive buttons that can be easily pressed with just one touch. It is compact in size, lightweight, and can be easily photographed with one hand



Equipment parameters Device parameters

| | |
|--------------------------------------|------------------------|
| X-ray tube high voltage | 60KV |
| X-ray tube current | 2mA |
| Loading leaked radiation | <0.25MG/H |
| Skin focal length | 200mm |
| Lithium battery capacity | 14.8V/2500mAh |
| working frequency | 30HZ |
| Focus on management | 0.7mm*0.7mm |
| Exposure time | 0.1-2.0s |
| Non loaded leakage radiation | <0MG/H |
| Limit the diameter of the line field | 58mm |
| Tube lifespan | On average 10000 hours |
| Whole machine weight | 1.92kg |



Three colors