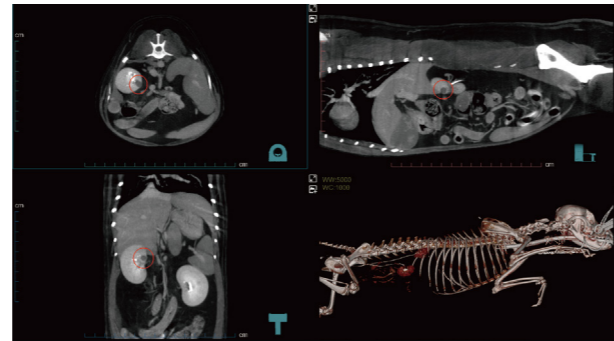


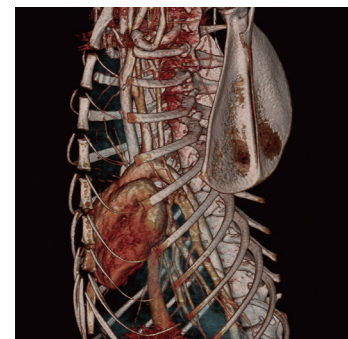
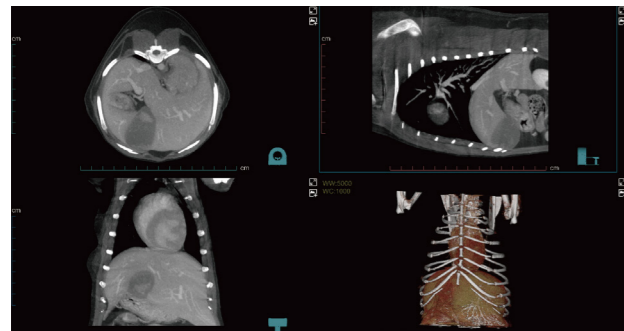
► Renal infarction:

The animal presented with anorexia, vomiting, dehydration, and abnormal urination. No obvious abnormalities were detected in the right kidney on plain scan; however, a cortical enhancement defect was observed after contrast administration. Right renal partial infarction was suspected.

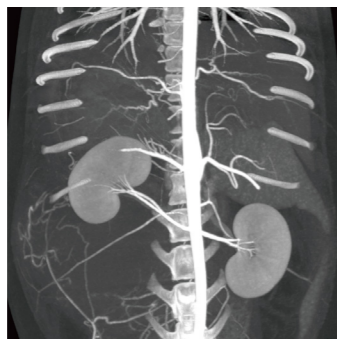


◀ Gallbladder Mucocele:

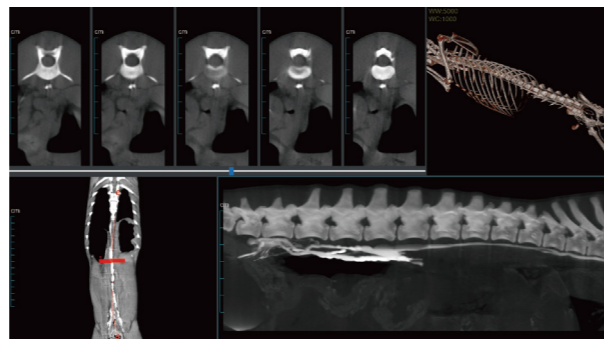
The liver demonstrated homogeneous enhancement in the delayed phase. The gallbladder was filled with irregular soft-tissue attenuation material, and the wall was unevenly thickened. Gallbladder mucocele was suspected.



Cardiac 3D Rendering



Vascular MIP



Thoracic Duct Curved Reconstruction

Clinical Applications

Part	Case
Head&Neck	Cerebral Edema, Brain Hemorrhage, Sinusitis, Otitis, Mastoid Effusion, Nasopharyngeal Stenosis, Tracheal Narrowing, etc.
Dental	Periodontitis, Periapical Abscess, Alveolar Bone Atrophy, Oral Cyst, Tooth Root Resorption, etc.
Thoracic	Pulmonary Edema, Pulmonary Nodules, Interstitial Pneumonia, Pulmonary Inflammation, etc.
Abdomen	Abdominal Wall Inflammation, Peritoneal Fluid Accumulation, Urography, Renal Imaging, Gallstones, Pancreatitis, Kidney Hardening, etc.
Vascular	Abdominal Three-Phase Angiography, Peripheral Artery Thrombosis, Vascular Stenosis, etc.
Spine	Spinal Canal Imaging, Spinal Protrusion, Vertebral Imaging, Spondylosis, Thoracic Spine Fracture, etc.
Tumors	Thyroid Tumors, Nasal Tumors, Ovarian Tumors, Renal Tumors, Adrenal Tumors, etc.
Others	Arthritis, Thoracic Duct Imaging, Peritoneal Calcification, etc.



Facebook



YouTube



WhatsApp



TikTok

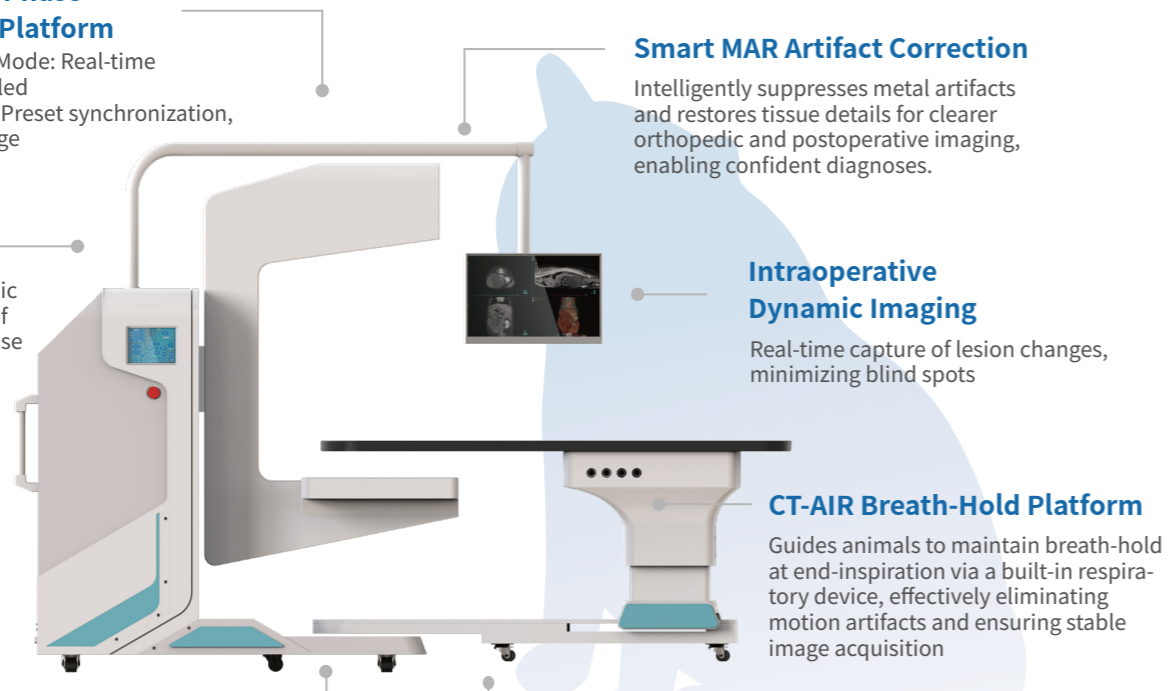
Vetopia 70 Veterinary Cone Beam Computed Tomography System Intraoperative CT: The Specialist's Choice



Vetopia 70

Dual-Mode Triple-Phase Contrast Capture Platform

- Experience-Triggered Mode: Real-time triggering, user-controlled
- Time-Triggered Mode: Preset synchronization, full triple-phase coverage



Smart MAR Artifact Correction

Intelligently suppresses metal artifacts and restores tissue details for clearer orthopedic and postoperative imaging, enabling confident diagnoses.

Intraoperative Dynamic Imaging

Real-time capture of lesion changes, minimizing blind spots

CT-AIR Breath-Hold Platform

Guides animals to maintain breath-hold at end-inspiration via a built-in respiratory device, effectively eliminating motion artifacts and ensuring stable image acquisition

Smart Imaging Enhancement Algorithm Suite

Precision imaging, protecting every life; Advanced CT image processing, safeguarding animal health

DSA

Provides high-quality angiographic imaging with clear visualization of vascular structures, offering precise guidance for interventional procedures

Database-Assisted Reporting System

Built-in rich case database, enabling quick retrieval of similar cases to assist diagnosis and report generation



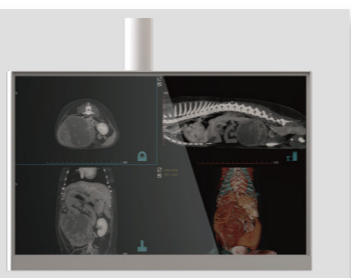
Flexible C-arm

Supports 360° free rotation for angle adjustment, providing more viewing angles for surgical procedures.



Multi-angle Table

Supports multi-angle rotation to easily adjust positions for various imaging requirements.



Intraoperative Monitor

Displays real-time patient anatomy and imaging information during surgery, ensuring high-definition imaging support throughout diagnosis and operation.

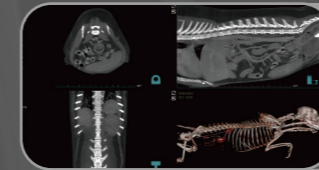
Four-in-One

Computed Tomography(CT)/Fluoroscopy (Dynamic DR)/X-ray(DR)/Panoramic



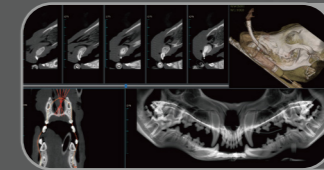
DR

Edge Enhancement
Multi-algorithms
Tools: TPLO/VHS/TTA



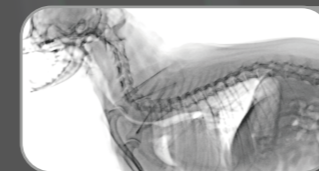
CT

Ultra-Fast Scan
0.16mm Ultra-Thin Slice Thickness
CT-AIR Breathing Hold



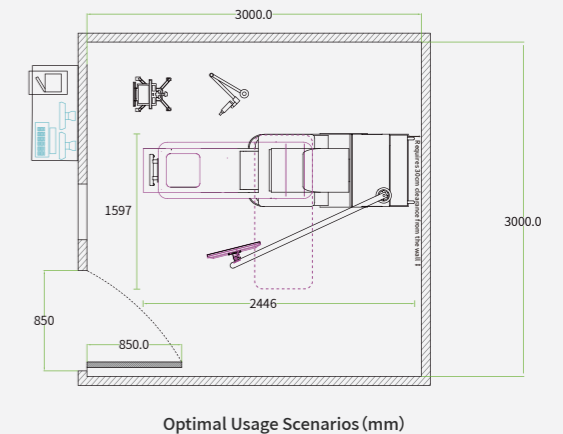
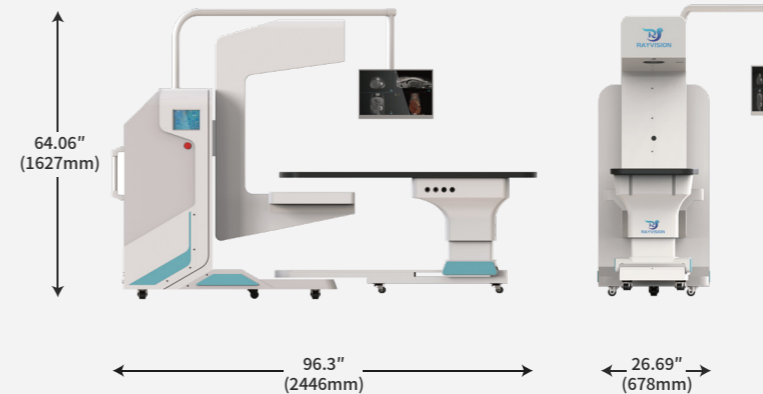
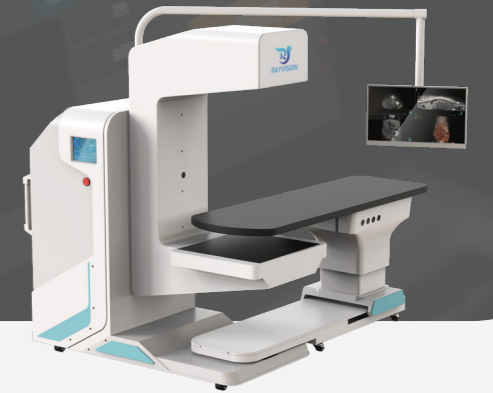
Dental Panoramic

One Scan Covers Full Arch & Jaw



FL

Real-Time Dynamic Enhancement
1-Minute Continuous Exposure
Precise Lesion Detection



Specifications

Gantry	Structure	C-Arm
	Nominal Power	15kW
	Input Power	(220±22) VAC
	Tube Heat Capacity	150kJ
	Maximum Tube Voltage	120kV
Scan Parameters	Tube Power	15kW
	Reconstruction Slices	800
	Minimum Slice Thickness	0.16mm
	Minimum Pixel Size	0.14mm
	Detector Matrix	3072x3072
	CT Scan Time	4.5s
Max.FOV (L×W)	21.65"×11.02" (55cm×28cm)	

Technical Requirements:

Requirements:	Specifications
Voltage	(220+22)VAC
Power Resistance	≤0.5Ω
Frequency	50Hz/60HZ
Power Capacity	≥15kVA
Power Cable	6mm ²
Lead Shielding	3mm lead equivalent
Temperature	10°C-35°C
Humidity	30%-75%RH(Non-Condensing)
Air Pressure	700-1060hPa

