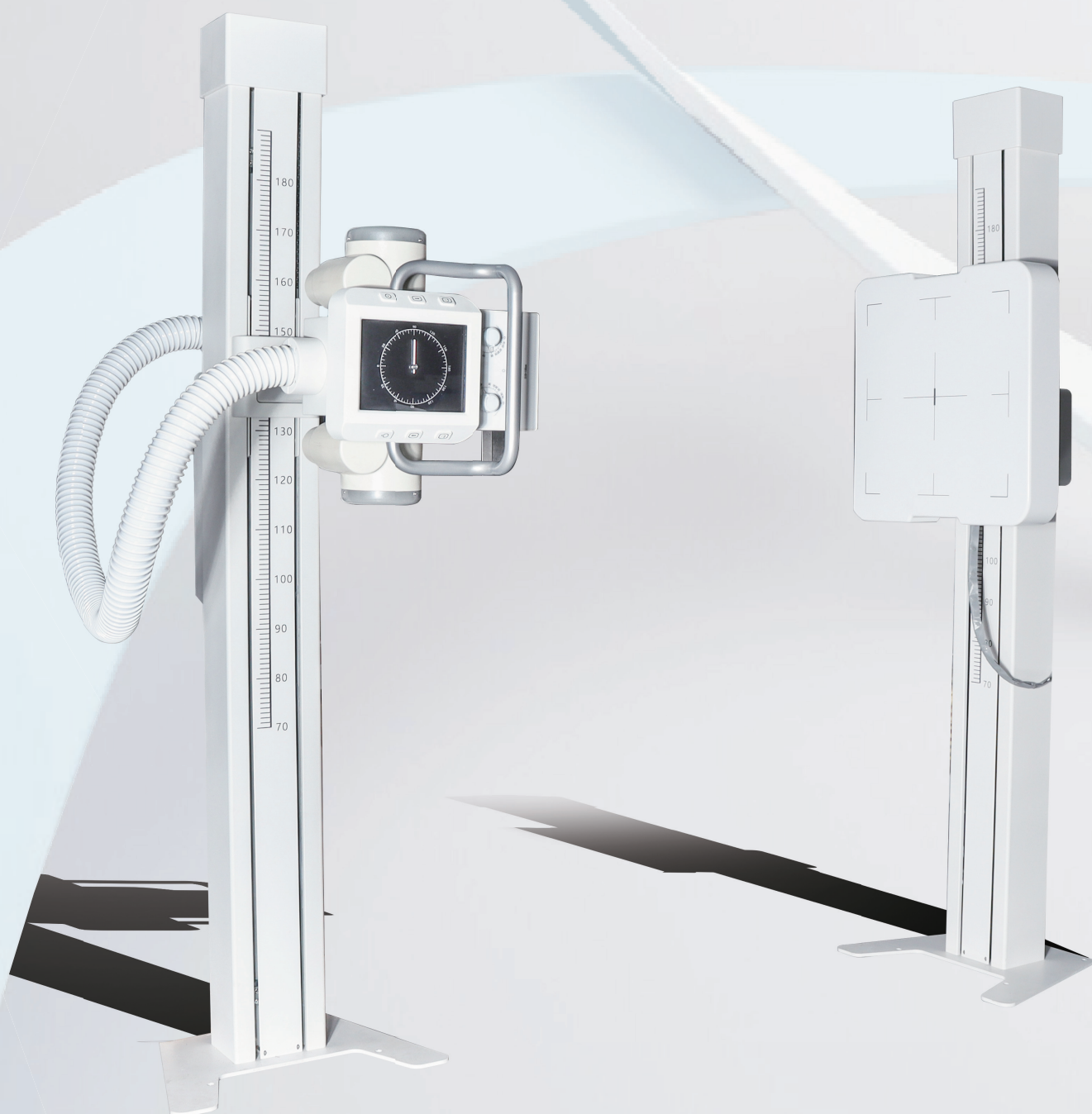


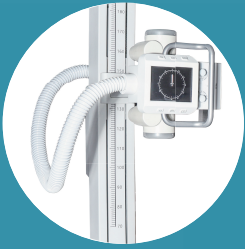
iVision-1000X

Vet Digital X-ray Imaging system

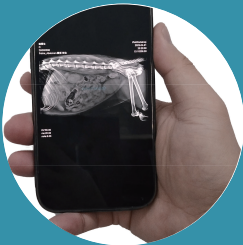




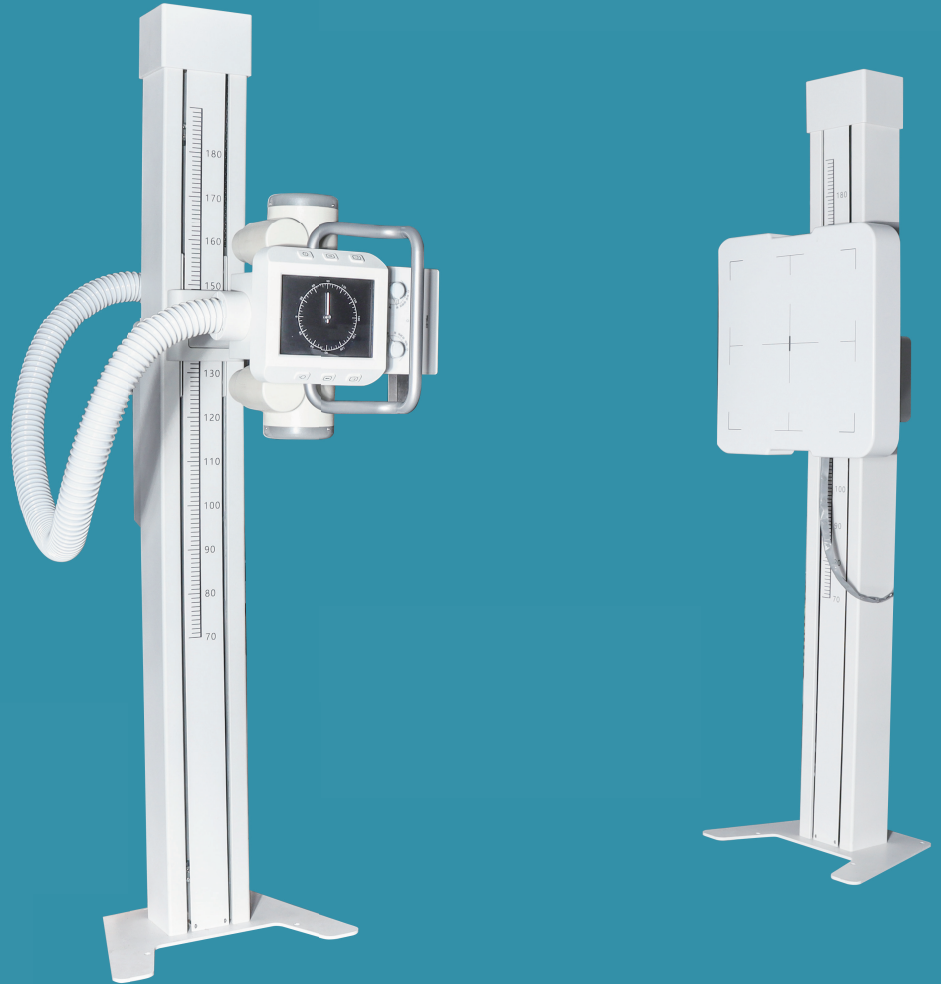
- Extra thick steel plate
- High precision machining
- Medical grade spray
- Anti-rust and anti-aging



- Easy after-sales service
- The first three-door rack design
- Modular circuit



- Cloud image
- Multi-terminal diagnostic images can be realized
- Both in/out-hospital mobile terminals available



A new generation of professional animal X-ray imaging system (DR), specially designed for veterinarians, intelligently matches accurate and safe exposure parameter conditions according to the size of the pet, preventing the operator from receiving more scattered radiation hazards, and quickly provides clear and accurate image. The perfect workflow and high quality make it popular among veterinarians and become the first choice for Vet DR.

Installation requirements

Product specification

BUCKY Movement Distance:

1450mm \pm 10mm (maximum 1785mm,
minimum 335mm)

Overall height: 2125mm \pm 10mm



Product configuration

model:iVision-1000X

High voltage generator

Input power voltage:380V/50A
Maximum output power:80KW
KV range:40~150KV \pm (1%+1KV)
M A range: 10~1000MA \pm (1%+1KV)
Exposure time:0.001-6.3s

X-ray tube:CanonE7252X

Maximum voltage:150KV \pm (1%+1KV)
Size focus: 0.6/1.2 mm
Thermal capacity:140kKHU

Flat panel detector

Scintillator:amorphous silicon a-Si cesium iodide CsI
Image size/pixel matrix: : (17 \times 17in)/3072 \times 3072
Pixel pitch:139 μ m
A/D conversion:16bit
Trigger mode: External synchronization
Data transmission: Gigabit Ethernet
Size(LxWxH):460 \times 460 \times 15mm

Image acquisition workstation

Industrial PC control unit:
CPU: i7 Intel
Memory: 8G
Storage: 128GB solid state + 1TB mechanical hard drive (2TB optional)
Monitor: Dual screen 21.5-inch industrial capacitive touch + 24-inch high-definition display

Animal X-ray bed

Height of column:2100mm
Column up and down movement range: 1400mm 380-1900

Accessory

Collimator: built-in LED light source (automatically off after 30 seconds)
Light field range SID = 1 meter: 430*430mm
Inherent filtering:1.0 mm Al /75 kV
Ruler:Beam limiter built-in measuring ruler

After-sales service

Warranty period: 2 years, free accessories and maintenance services provided during the warranty period